

SPECIFICATIONS:

FREQUENCY: 2.0 GHz TO 18 GHz
 INSERTION LOSS: 3.0 db MAXIMUM
 ISOLATION: 55 db MINIMUM
 VSWR: 2.0:1 MAXIMUM ON AND OFF
 POWER HANDLING: .. 1 WATT (CW AVERAGE)
 10 W PEAK (1 μ s P.W. \geq 50:1 DUTY) MAXIMUM
 SPEED: 100 ns MAXIMUM
 IMPEDANCE 50 OHMS
 POWER SUPPLY: +5V @ 150 mA MAX.
 -15V @ 65mA MAXIMUM
 CONNECTORS: SMA FEMALE (RF) SOLDER PIN (CTL)
 CONTROL LOGIC: TTL COMPATIBLE

LOGIC TABLE			
LOGIC	J1-J2	J1-J3	J1-J4
E2=0	ON		
E2=1	OFF		
E3=0		ON	
E3=1		OFF	
E4=0			ON
E4=1			OFF

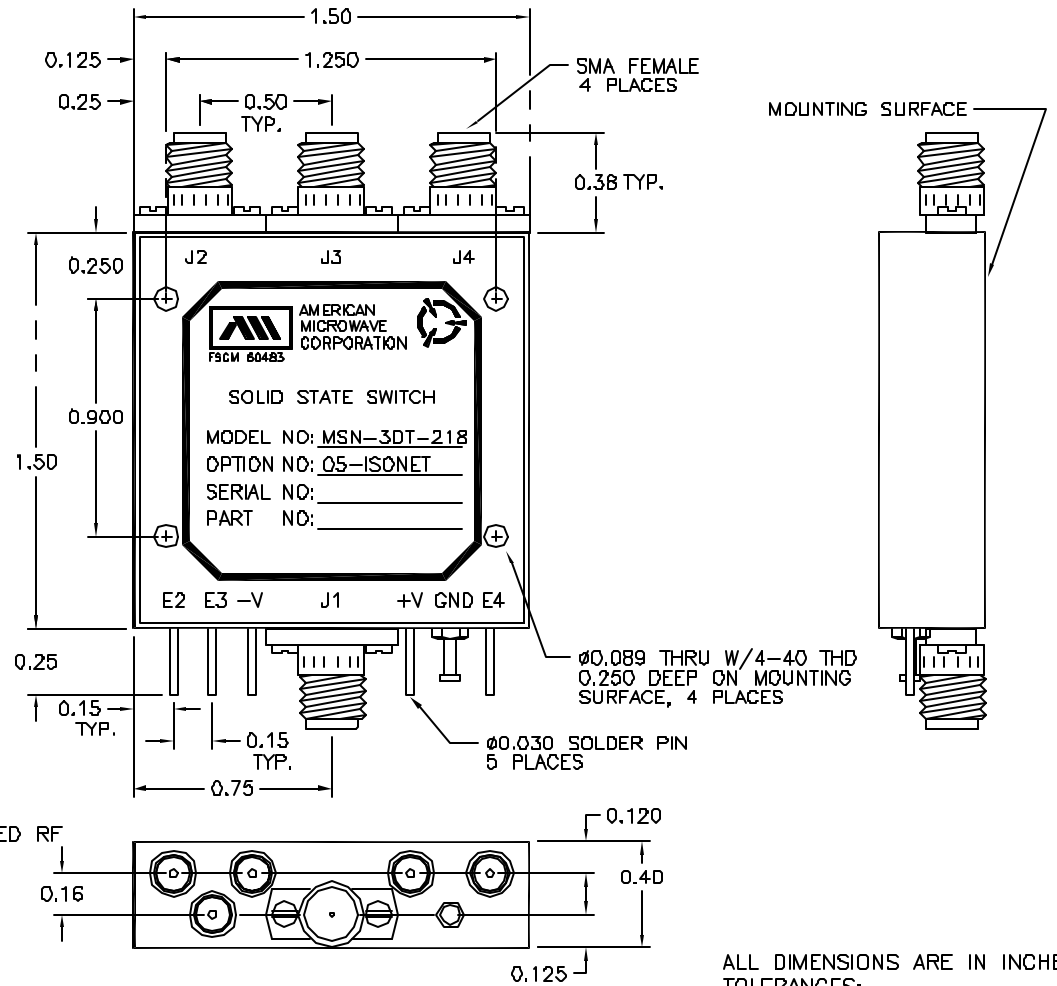
NOTE:

- J1 IS RF COMMON; J2, J3 & J4 ARE RF INPUT/OUTPUT
- E2, E3 & E4 ARE INDEPENDANT TTL CONTROL INPUTS FOR EACH CHANNEL, TTL LOGIC (0) IS LOW LOSS, (1) IS ISOLATION
- TTL (0) IS 0 TO 0.8V, TTL (1) IS 2.0 TO 5.5V
- SWITCHING SPEED IS MEASURED FROM 50% TTL TO 10%/90% DETECTED RF


ENVIRONMENTAL RATINGS

TEMPERATURE: -55°C TO +85°C (OPERATING)
 -65°C TO +125°C (STORAGE)
 HUMIDITY: MIL-STD-202F, METHOD 103B COND. B
 SHOCK: MIL-STD-202F, METHOD 213B COND. B
 VIBRATION: MIL-STD-202F, METHOD 204D COND. B
 ALTITUDE: MIL-STD-202F, METHOD 105C COND. B
 TEMPERATURE CYCLE: MIL-STD-202F, METHOD 107D COND. A

REVISIONS				
ZONE	REV.	DESCRIPTION	DATE	APPROVED
	A	ORIGINAL RELEASE	8/22/97	



ALL DIMENSIONS ARE IN INCHES
 TOLERANCES:
 X.XX \pm 0.020
 X.XXX \pm 0.010

PART NO.		 AMERICAN MICROWAVE CORPORATION FREDERICK, MARYLAND		
APPROVALS	DATE	TITLE		
DRAWN <i>WSP</i>	8/22/97	OUTLINE DRAWING MSN-3DT-218-05-ISONET ABSORPTIVE/NON-REFLECTIVE SOLID STATE SWITCH		
CHECKED		SIZE	F3CM NO.	DWG NO.
ISSUED		A	60483	100-4055
		SCALE 3:1	SHEET 1 of 1	